

Acta Crystallographica Section E

**Structure Reports**

**Online**

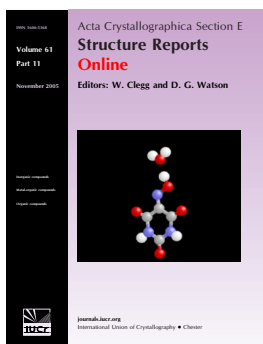
ISSN 1600-5368

Editors: **W. Clegg and D. G. Watson**

## 3-Methoxy-*N-p*-tolylbenzohydroxamic acid

**Abdualbasit M. Graisa, Yang Farina, Muhammad Kassim, Mohd. Razali Rizal and Seik Weng Ng**

*Acta Cryst.* (2008). **E64**, o251



*Acta Crystallographica Section E: Structure Reports Online* is the IUCr's highly popular open-access structural journal. It provides a simple and easily accessible publication mechanism for the growing number of inorganic, metal-organic and organic crystal structure determinations. The electronic submission, validation, refereeing and publication facilities of the journal ensure very rapid and high-quality publication, whilst key indicators and validation reports provide measures of structural reliability. In 2007, the journal published over 5000 structures. The average publication time is less than one month.

Crystallography Journals **Online** is available from [journals.iucr.org](http://journals.iucr.org)

Acta Crystallographica Section E

## Structure Reports

Online

ISSN 1600-5368

3-Methoxy-*N*-*p*-tolylbenzohydroxamic acidAbdualbasit M. Graisa,<sup>a</sup> Yang Farina,<sup>a</sup> Muhammad Kassim,<sup>a</sup> Mohd. Razali Rizal<sup>b</sup> and Seik Weng Ng<sup>b\*</sup><sup>a</sup>School of Chemical Sciences and Food Technology, Universiti Kebangsaan Malaysia, 43500 Bangi, Selangor, Malaysia, and <sup>b</sup>Department of Chemistry, University of Malaya, 50603 Kuala Lumpur, Malaysia  
Correspondence e-mail: seikweng@um.edu.my

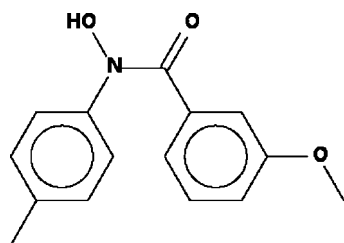
Received 22 November 2007; accepted 29 November 2007

Key indicators: single-crystal X-ray study;  $T = 293$  K; mean  $\sigma(\text{C}-\text{C}) = 0.003$  Å;  $R$  factor = 0.044;  $wR$  factor = 0.121; data-to-parameter ratio = 13.4.

Two molecules of the title compound,  $\text{C}_{15}\text{H}_{15}\text{NO}_3$ , are linked by a pair of  $\text{O}-\text{H}\cdots\text{O}_{\text{carbonyl}}$  hydrogen bonds over a centre of inversion to form a hydrogen-bonded dimer. With respect to the  $-\text{C}(=\text{O})-\text{N}(\text{OH})-$  unit, the methoxy-substituted ring is twisted by  $42.2$  (1)°, whereas the methyl-substituted ring is twisted by  $52.2$  (1)°.

## Related literature

The parent *N*-phenylbenzohydroxamic acid exists in the *cis* form as well as the common *trans* form (see Yamasaki *et al.*, 2006). For the synthesis and spectroscopic data of the title compound, see: Agrawal & Tandon (1971, 1972, 1973).



## Experimental

## Crystal data

 $\text{C}_{15}\text{H}_{15}\text{NO}_3$   
 $M_r = 257.28$ Monoclinic,  $P2_1/c$   
 $a = 11.332$  (1) Å $b = 7.939$  (1) Å  
 $c = 15.567$  (2) Å  
 $\beta = 106.397$  (2)°  
 $V = 1343.5$  (2) Å<sup>3</sup>  
 $Z = 4$ Mo  $K\alpha$  radiation  
 $\mu = 0.09$  mm<sup>-1</sup>  
 $T = 293$  (2) K  
 $0.47 \times 0.36 \times 0.27$  mm

## Data collection

Bruker APEX diffractometer  
Absorption correction: none  
6832 measured reflections2378 independent reflections  
1748 reflections with  $I > 2\sigma(I)$   
 $R_{\text{int}} = 0.023$ 

## Refinement

 $R[F^2 > 2\sigma(F^2)] = 0.044$   
 $wR(F^2) = 0.121$   
 $S = 1.06$   
2378 reflections  
178 parameters  
1 restraintH atoms treated by a mixture of independent and constrained refinement  
 $\Delta\rho_{\text{max}} = 0.17$  e Å<sup>-3</sup>  
 $\Delta\rho_{\text{min}} = -0.13$  e Å<sup>-3</sup>

Table 1

Hydrogen-bond geometry (Å, °).

$D-H\cdots A$	$D-H$	$H\cdots A$	$D\cdots A$	$D-H\cdots A$
$\text{O1}-\text{H1}\cdots\text{O2}^i$	0.86 (1)	1.99 (2)	2.699 (2)	139 (2)

Symmetry code: (i)  $-x + 1, -y + 1, -z + 1$ .

Data collection: *SMART* (Bruker, 2000); cell refinement: *SAINT* (Bruker, 2000); data reduction: *SAINT*; program(s) used to solve structure: *SHELXS97* (Sheldrick, 1997); program(s) used to refine structure: *SHELXL97* (Sheldrick, 1997); molecular graphics: *X-SEED* (Barbour, 2001); software used to prepare material for publication: *publCIF* (Westrip, 2007).

The authors acknowledge Professor Bohari M. Yamin's assistance with the diffraction measurements. The authors thank Universiti Kebangsaan Malaysia and the University of Malaya for supporting this study.

Supplementary data and figures for this paper are available from the IUCr electronic archives (Reference: AV2005).

## References

- Agrawal, Y. K. & Tandon, S. G. (1971). *J. Chem. Eng. Data*, **16**, 495–506.  
 Agrawal, Y. K. & Tandon, S. G. (1972). *J. Indian Chem. Soc.* **49**, 911–914.  
 Agrawal, Y. K. & Tandon, S. G. (1973). *Spectrosc. Lett.* **6**, 547–562.  
 Barbour, L. J. (2001). *J. Supramol. Chem.* **1**, 189–191.  
 Bruker (2000). *SMART* (Version 5.63A) and *SAINT* (Version 6.63A). Bruker AXS Inc., Madison, Wisconsin, USA.  
 Sheldrick, G. M. (1997). *SHELXS97* and *SHELXL97*. University of Göttingen, Germany.  
 Westrip, S. P. (2007). *publCIF*. In preparation.  
 Yamasaki, R., Tanatani, A., Azumaya, I., Masu, H., Yamaguchi, K. & Kagechika, H. (2006). *Cryst. Growth Des.* **6**, 2007–2010.

**supplementary materials**

*Acta Cryst.* (2008). E64, o251 [ doi:10.1107/S1600536807064379 ]

### 3-Methoxy-*N-p*-tolylbenzohydroxamic acid

A. M. Graisa, Y. Farina, M. Kassim, M. R. Rizal and S. W. Ng

#### Experimental

3-Methoxybenzoyl chloride (1.4 g, 0.01 mmol) dissolved in ether was added to *N*-(4-tolyl)hydroxylamine (1.0 g, 0.01 mmol) dissolved in ether in the presence of sodium bicarbonate (0.7 g, 0.01 mmol). The reaction was carried out in an ice-bath. The solid that formed on removal of the solvent was extracted with ethyl acetate (10 ml). The solution yielded crystals after being set aside in a refrigerator.

#### Refinement

The carbon-bound H atoms were placed at calculated positions (C–H 0.93–0.97 Å), and were included in the refinement in the riding model approximation with  $U(\text{H})$  set to 1.2–1.5 $U_{\text{eq}}(\text{C})$ . The hydroxy hydrogen atom was located in a difference Fourier map, and was refined with a distance restraint of O–H 0.85±0.01 Å.

#### Figures

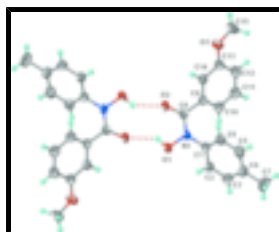


Fig. 1. Thermal ellipsoid plot of two molecules of  $\text{C}_{15}\text{H}_{15}\text{NO}_3$ . Displacement ellipsoids are drawn at the 50% probability level, and H atoms are shown as spheres of arbitrary radii.

### 3-Methoxy-*N-p*-tolylbenzohydroxamic acid

#### Crystal data

$\text{C}_{15}\text{H}_{15}\text{NO}_3$

$M_r = 257.28$

Monoclinic,  $P2_1/c$

Hall symbol: -P 2ybc

$a = 11.332$  (1) Å

$b = 7.939$  (1) Å

$c = 15.567$  (2) Å

$\beta = 106.397$  (2)°

$V = 1343.5$  (2) Å<sup>3</sup>

$Z = 4$

$F_{000} = 544$

$D_x = 1.272$  Mg m<sup>-3</sup>

Mo  $K\alpha$  radiation

$\lambda = 0.71073$  Å

Cell parameters from 7258 reflections

$\theta = 2.8$ – $21.7$ °

$\mu = 0.09$  mm<sup>-1</sup>

$T = 293$  (2) K

Irregular block, colorless

$0.47 \times 0.36 \times 0.27$  mm

# supplementary materials

---

## Data collection

Bruker APEX diffractometer	1748 reflections with $I > 2\sigma(I)$
Radiation source: fine-focus sealed tube	$R_{\text{int}} = 0.023$
Monochromator: Graphite	$\theta_{\text{max}} = 25.1^\circ$
$T = 293(2)$ K	$\theta_{\text{min}} = 1.9^\circ$
$\varphi$ and $\omega$ scans	$h = -13 \rightarrow 13$
Absorption correction: none	$k = -9 \rightarrow 9$
6832 measured reflections	$l = -14 \rightarrow 18$
2378 independent reflections	

## Refinement

Refinement on $F^2$	Secondary atom site location: difference Fourier map
Least-squares matrix: full	Hydrogen site location: inferred from neighbouring sites
$R[F^2 > 2\sigma(F^2)] = 0.044$	H atoms treated by a mixture of independent and constrained refinement
$wR(F^2) = 0.121$	$w = 1/[\sigma^2(F_o^2) + (0.0588P)^2 + 0.1129P]$
$S = 1.06$	where $P = (F_o^2 + 2F_c^2)/3$
2378 reflections	$(\Delta/\sigma)_{\text{max}} = 0.001$
178 parameters	$\Delta\rho_{\text{max}} = 0.17 \text{ e } \text{\AA}^{-3}$
1 restraint	$\Delta\rho_{\text{min}} = -0.13 \text{ e } \text{\AA}^{-3}$
Primary atom site location: structure-invariant direct methods	Extinction correction: none

## Fractional atomic coordinates and isotropic or equivalent isotropic displacement parameters ( $\text{\AA}^2$ )

	<i>x</i>	<i>y</i>	<i>z</i>	$U_{\text{iso}}^*/U_{\text{eq}}$
O1	0.50151 (12)	0.30374 (18)	0.40770 (9)	0.0623 (4)
H1	0.494 (2)	0.390 (2)	0.4393 (15)	0.108 (9)*
O2	0.62368 (12)	0.42304 (16)	0.56320 (8)	0.0635 (4)
O3	0.94373 (12)	0.18762 (18)	0.82493 (8)	0.0681 (4)
N1	0.60896 (13)	0.22480 (18)	0.45952 (9)	0.0484 (4)
C1	0.62980 (15)	0.0686 (2)	0.42159 (11)	0.0436 (4)
C2	0.63120 (16)	0.0638 (2)	0.33340 (12)	0.0521 (5)
H2	0.6186	0.1618	0.2993	0.063*
C3	0.65135 (16)	-0.0866 (3)	0.29608 (13)	0.0585 (5)
H3	0.6524	-0.0890	0.2366	0.070*
C4	0.67003 (16)	-0.2340 (2)	0.34493 (15)	0.0588 (5)
C5	0.66643 (17)	-0.2264 (2)	0.43301 (15)	0.0616 (6)
H5	0.6788	-0.3245	0.4670	0.074*
C6	0.64499 (16)	-0.0772 (2)	0.47175 (13)	0.0532 (5)
H6	0.6409	-0.0751	0.5306	0.064*
C7	0.6942 (2)	-0.3978 (3)	0.30416 (18)	0.0897 (8)

H7A	0.6333	-0.4791	0.3082	0.135*
H7B	0.7744	-0.4387	0.3359	0.135*
H7C	0.6904	-0.3802	0.2424	0.135*
C8	0.66747 (16)	0.2968 (2)	0.53701 (11)	0.0453 (4)
C9	0.78932 (15)	0.2288 (2)	0.58918 (11)	0.0429 (4)
C10	0.88037 (16)	0.1831 (2)	0.55018 (13)	0.0546 (5)
H10	0.8647	0.1839	0.4882	0.065*
C11	0.99379 (17)	0.1367 (3)	0.60382 (14)	0.0639 (6)
H11	1.0548	0.1060	0.5775	0.077*
C12	1.01962 (17)	0.1344 (3)	0.69602 (14)	0.0606 (5)
H12	1.0968	0.1015	0.7314	0.073*
C13	0.92907 (17)	0.1818 (2)	0.73517 (12)	0.0502 (5)
C14	0.81453 (16)	0.2289 (2)	0.68151 (12)	0.0468 (4)
H14	0.7537	0.2610	0.7077	0.056*
C15	1.0630 (2)	0.1592 (4)	0.88294 (15)	0.0953 (9)
H15A	1.0606	0.1657	0.9440	0.143*
H15B	1.1184	0.2432	0.8725	0.143*
H15C	1.0911	0.0495	0.8717	0.143*

Atomic displacement parameters ( $\text{\AA}^2$ )

	$U^{11}$	$U^{22}$	$U^{33}$	$U^{12}$	$U^{13}$	$U^{23}$
O1	0.0614 (9)	0.0629 (9)	0.0531 (8)	0.0250 (7)	0.0004 (7)	-0.0025 (7)
O2	0.0637 (8)	0.0571 (8)	0.0624 (8)	0.0228 (7)	0.0058 (7)	-0.0098 (6)
O3	0.0640 (9)	0.0829 (10)	0.0491 (8)	0.0086 (7)	0.0024 (7)	0.0036 (7)
N1	0.0468 (9)	0.0480 (9)	0.0461 (9)	0.0125 (7)	0.0061 (7)	0.0007 (7)
C1	0.0391 (9)	0.0429 (10)	0.0466 (10)	0.0025 (7)	0.0086 (8)	-0.0022 (8)
C2	0.0516 (11)	0.0528 (11)	0.0498 (11)	0.0051 (8)	0.0109 (9)	-0.0004 (9)
C3	0.0513 (11)	0.0701 (14)	0.0514 (11)	0.0044 (10)	0.0104 (9)	-0.0129 (10)
C4	0.0418 (10)	0.0537 (12)	0.0753 (14)	-0.0004 (9)	0.0076 (10)	-0.0191 (10)
C5	0.0546 (12)	0.0439 (11)	0.0822 (15)	0.0003 (9)	0.0123 (11)	0.0040 (10)
C6	0.0535 (11)	0.0508 (11)	0.0543 (11)	0.0023 (9)	0.0134 (9)	0.0051 (9)
C7	0.0737 (15)	0.0686 (15)	0.121 (2)	0.0060 (12)	0.0177 (14)	-0.0378 (14)
C8	0.0469 (10)	0.0425 (10)	0.0464 (10)	0.0050 (8)	0.0129 (9)	0.0009 (8)
C9	0.0425 (9)	0.0355 (9)	0.0492 (10)	0.0021 (7)	0.0103 (8)	-0.0015 (7)
C10	0.0479 (11)	0.0607 (12)	0.0549 (12)	0.0027 (9)	0.0142 (9)	-0.0065 (9)
C11	0.0469 (11)	0.0752 (14)	0.0718 (14)	0.0071 (10)	0.0202 (10)	-0.0125 (11)
C12	0.0430 (10)	0.0606 (12)	0.0713 (15)	0.0075 (9)	0.0051 (10)	-0.0037 (10)
C13	0.0520 (11)	0.0425 (10)	0.0514 (12)	0.0008 (8)	0.0071 (9)	-0.0011 (8)
C14	0.0434 (10)	0.0445 (10)	0.0525 (11)	0.0043 (8)	0.0136 (8)	0.0001 (8)
C15	0.0872 (18)	0.118 (2)	0.0605 (14)	0.0368 (15)	-0.0128 (13)	-0.0057 (13)

Geometric parameters ( $\text{\AA}$ ,  $^\circ$ )

O1—N1	1.4041 (18)	C7—H7A	0.9600
O1—H1	0.86 (1)	C7—H7B	0.9600
O2—C8	1.238 (2)	C7—H7C	0.9600
O3—C13	1.361 (2)	C8—C9	1.491 (2)
O3—C15	1.416 (2)	C9—C10	1.385 (2)

## supplementary materials

---

N1—C8	1.330 (2)	C9—C14	1.384 (2)
N1—C1	1.422 (2)	C10—C11	1.371 (3)
C1—C2	1.378 (2)	C10—H10	0.9300
C1—C6	1.380 (2)	C11—C12	1.382 (3)
C2—C3	1.375 (3)	C11—H11	0.9300
C2—H2	0.9300	C12—C13	1.385 (3)
C3—C4	1.379 (3)	C12—H12	0.9300
C3—H3	0.9300	C13—C14	1.382 (2)
C4—C5	1.385 (3)	C14—H14	0.9300
C4—C7	1.506 (3)	C15—H15A	0.9600
C5—C6	1.381 (3)	C15—H15B	0.9600
C5—H5	0.9300	C15—H15C	0.9600
C6—H6	0.9300		
N1—O1—H1	103.5 (18)	H7B—C7—H7C	109.5
C13—O3—C15	117.87 (16)	O2—C8—N1	120.20 (15)
C8—N1—O1	117.30 (14)	O2—C8—C9	120.62 (15)
C8—N1—C1	130.73 (14)	N1—C8—C9	119.10 (15)
O1—N1—C1	111.69 (13)	C10—C9—C14	119.63 (16)
C2—C1—C6	120.42 (16)	C10—C9—C8	123.08 (16)
C2—C1—N1	119.18 (15)	C14—C9—C8	116.95 (15)
C6—C1—N1	120.38 (16)	C11—C10—C9	119.33 (18)
C3—C2—C1	119.64 (17)	C11—C10—H10	120.3
C3—C2—H2	120.2	C9—C10—H10	120.3
C1—C2—H2	120.2	C10—C11—C12	121.57 (18)
C2—C3—C4	121.47 (18)	C10—C11—H11	119.2
C2—C3—H3	119.3	C12—C11—H11	119.2
C4—C3—H3	119.3	C11—C12—C13	119.17 (18)
C3—C4—C5	117.80 (17)	C11—C12—H12	120.4
C3—C4—C7	121.2 (2)	C13—C12—H12	120.4
C5—C4—C7	121.0 (2)	O3—C13—C14	115.67 (16)
C6—C5—C4	121.85 (18)	O3—C13—C12	124.76 (17)
C6—C5—H5	119.1	C14—C13—C12	119.57 (17)
C4—C5—H5	119.1	C13—C14—C9	120.72 (16)
C1—C6—C5	118.78 (18)	C13—C14—H14	119.6
C1—C6—H6	120.6	C9—C14—H14	119.6
C5—C6—H6	120.6	O3—C15—H15A	109.5
C4—C7—H7A	109.5	O3—C15—H15B	109.5
C4—C7—H7B	109.5	H15A—C15—H15B	109.5
H7A—C7—H7B	109.5	O3—C15—H15C	109.5
C4—C7—H7C	109.5	H15A—C15—H15C	109.5
H7A—C7—H7C	109.5	H15B—C15—H15C	109.5
C8—N1—C1—C2	-133.3 (2)	C1—N1—C8—C9	13.6 (3)
O1—N1—C1—C2	53.0 (2)	O2—C8—C9—C10	-133.46 (18)
C8—N1—C1—C6	48.5 (3)	N1—C8—C9—C10	43.3 (2)
O1—N1—C1—C6	-125.21 (17)	O2—C8—C9—C14	39.8 (2)
C6—C1—C2—C3	-1.8 (3)	N1—C8—C9—C14	-143.42 (16)
N1—C1—C2—C3	179.96 (15)	C14—C9—C10—C11	0.8 (3)
C1—C2—C3—C4	0.2 (3)	C8—C9—C10—C11	173.91 (18)

C2—C3—C4—C5	0.8 (3)	C9—C10—C11—C12	0.0 (3)
C2—C3—C4—C7	-178.94 (18)	C10—C11—C12—C13	-0.7 (3)
C3—C4—C5—C6	0.0 (3)	C15—O3—C13—C14	-172.98 (19)
C7—C4—C5—C6	179.68 (18)	C15—O3—C13—C12	6.5 (3)
C2—C1—C6—C5	2.5 (3)	C11—C12—C13—O3	-178.85 (18)
N1—C1—C6—C5	-179.29 (15)	C11—C12—C13—C14	0.6 (3)
C4—C5—C6—C1	-1.6 (3)	O3—C13—C14—C9	179.64 (15)
O1—N1—C8—O2	3.7 (3)	C12—C13—C14—C9	0.1 (3)
C1—N1—C8—O2	-169.65 (16)	C10—C9—C14—C13	-0.8 (2)
O1—N1—C8—C9	-173.02 (14)	C8—C9—C14—C13	-174.38 (15)

*Hydrogen-bond geometry (Å, °)*

<i>D</i> —H... <i>A</i>	<i>D</i> —H	H... <i>A</i>	<i>D</i> ... <i>A</i>	<i>D</i> —H... <i>A</i>
O1—H1...O2 <sup>i</sup>	0.86 (1)	1.99 (2)	2.699 (2)	139 (2)

Symmetry codes: (i)  $-x+1, -y+1, -z+1$ .

Fig. 1

